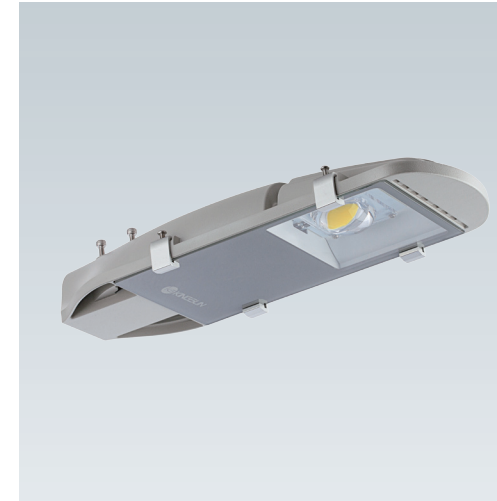


## MINI-1 Series Street Light

- Integrated die-casting aluminum design ensures heat dissipation.
- High transmission glass and high-reflection coating increase light output.
- Die-casting aluminum housing and stainless steel screws enhance lamp life span.
- Surge protection device ensures driver and LEDs from being damaged.
- Simple structure gives high lamp performance.

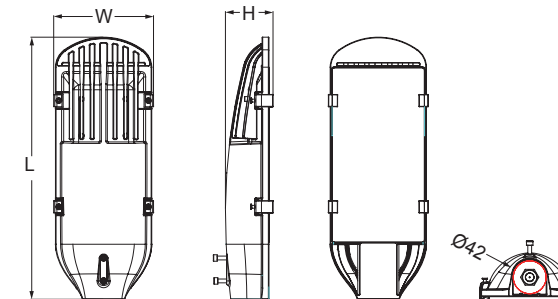


IP 65

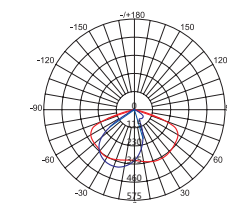
Item No.	System Power (W)	Module Qty	Lumen Output 5000K (lm)	CCT	Driver Efficiency	Dimension(mm)
RL283001	20	1	2200	5000K	>92%	L343xW130.6xH62.3
RL283001	30	1	3300	5000K	>92%	L343xW130.6xH62.3



Ordering Information	RL28 <b>3001</b> <b>A2</b> <b>50</b> <b>DB</b> <b>V27</b> <b>1</b> <b>1</b>
	<b>1</b> <b>2</b> <b>3</b> <b>4</b> <b>5</b> <b>6</b>
1 System Power	<b>3001:</b> 20W <b>3001:</b> 30W
2 Light Distribution	A2
3 Color Temp	<b>30:</b> 3000±300K <b>40:</b> 4000±300K <b>50:</b> 5000±300K
4 Housing Color	<b>CG:</b> Cold Grey <b>SG:</b> Silver Grey <b>BK:</b> Black <b>DB:</b> Dark Blue
5 Input Voltage	<b>A22:</b> AC 220-240 V <b>V27:</b> AC 120-277V
6 Control Mode	<b>0:</b> Without <b>1:</b> Timer <b>2:</b> ZigBee <b>6:</b> Photocell 0-10V Dim Dali Control PLC



Light Distribution Curve



Luminous Intensity Unit : cd/km  
Lens Code : A2M404  
Type II