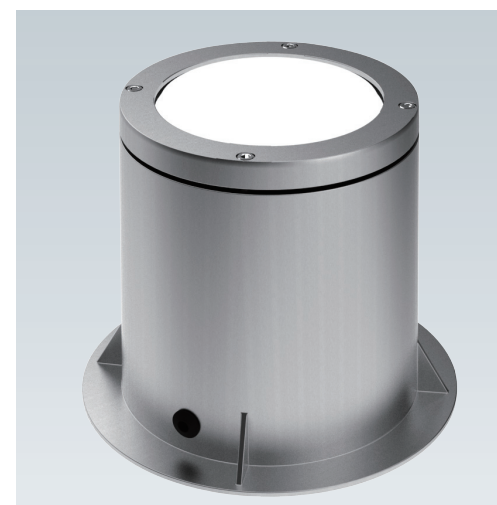




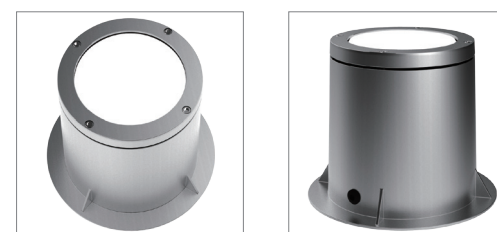
# IG1E In-ground Light

- Long lifespan, low power consumption, low surface temperature.
- Alluminum alloy light shell, corrosion resistance and acid-base resistance.
- Unique light shell structure maintains stable position underground without extrusion for a prolonged period of time.
- Water-proof triple-sealing prevents water or fog penetration in the lights.
- Can bear over 1500kg pressure.



IP 68

Item NO.	System Power (W)	#of LEDs	Light Color	Input Voltage	LamDimension(mm)
IG1EA018	30	18	Single / FC	AC 110-240	Φ210×H172



Ordering Information	IG1E A018 S5 45 SG V24 6 0 1			
1 Color Temp	30: 3045±175K	40: 3985±275K	45: 4503±243K	50: 5028±283K

