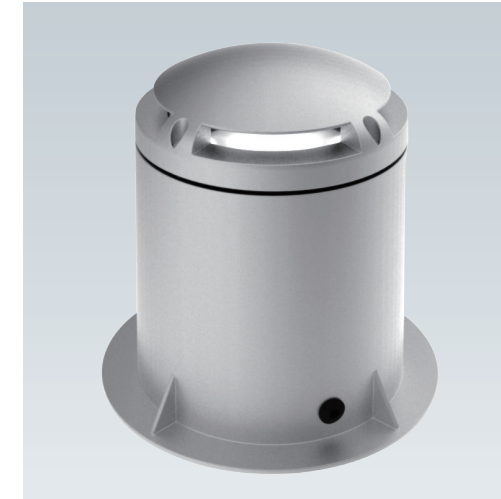


# In-ground Light



## IG1D In-ground Light

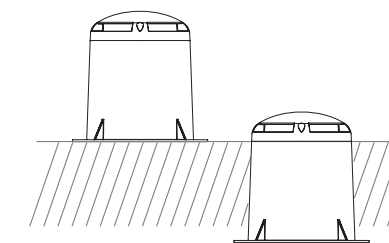
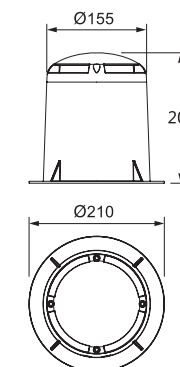
- Long lifespan, low power consumption, low surface temperature
- Aluminum alloy light shell, Corrosion resistance and acid-base resistance.
- Unique light shell structure maintains stable position underground without extrusion for a prolonged period of time.
- Water-proof triple-sealing prevents water or fog penetration in the lights.
- Lighting in four directions to prevent glaring, can bear over 2000kg pressure



IP 68 Life Time 30,000hrs Working Temp -35°C - 50°C Working Humidity <= 95%

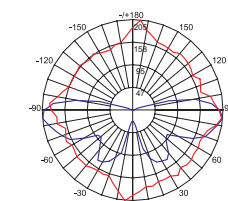
Item NO.	System Power (W)	#of LEDs	Light Color	Input Voltage	LamDimension(mm)
IG1DA004	11	4	Single / FC	AC 110-240	Φ210×H200

Ordering Information	IG1D A004 S5 45 SG V24 6 0			
1 Color Temp	30: 3045±175K	40: 3985±275K	45: 4503±243K	50: 5028±283K



Two way installation

Light Distribution Curve



Luminous Intensity Unit : cd/klm

Lens Code : S5N103

Type V